



EkoMed
!"#\$%&"



www.ekomedglobal.com



! "#\$%&'()*+

2	who we are	17-24	sweatshirts and hoodies
3	social responsibility	25-29	polos
4	about textile	30-35	uniforms
5	material descriptions	36-39	others
6	our products	37-42	biodegradable material
7-11	t-shirts	43	Canada headquarters
12-16	teamwear	44	China facility
		45-46	Logistic and Transportation Facility
		47	Ekomed Global Contacts

care
that never quits...



we care about your vision



EkoMed
!"#\$%&"

who we are

EkoMed Global is a globally integrated Manufacturer of Wearable products and a service provider of Textile Worldwide. At EkoMed Global, we focus on designing and manufacturing a wide range of Wearable Products and textile Procedures. At EkoMed Global, we are aware of the current need for new and innovative Wearable Products, so we are always adding to our product portfolio. All the production processes are managed and monitored in-house with ISO 9001 standards.

Our Primary goal is to provide reliable, qualitative, and continuous production within an overcapacity safe environment for the end-user. Our Headquarters is situated in Burlington, Canada and the manufacturing plant and Sterilization Facility in Hangzhou, China. Within Canada and China, EkoMed has warehouses and also operating offices. We are more than our slogan.

Care that never quits - We care about your safety!



social responsibility



EkoMed Global always takes the ethical approach towards environmental events, human rights, and economic sensitivities. EkoMed is working to improve the quality and development of our community and the surrounding society we live in, We are educating ourselves to follow and exceed the standards of SA 80000:2014

Care that never quits - We care about your safety!

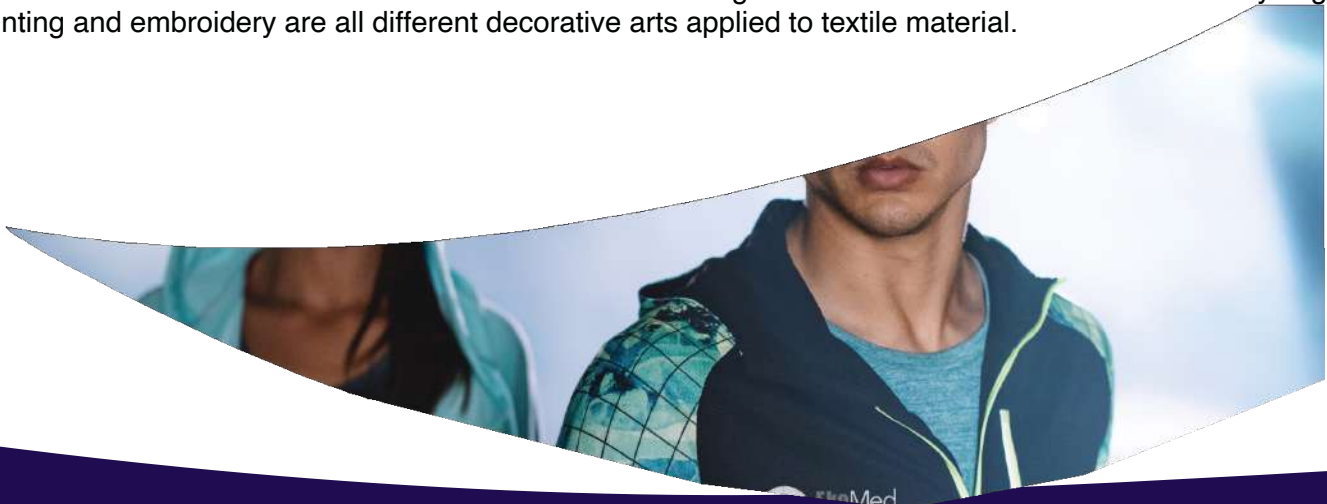
about textile

Textile is an umbrella term that includes various fiber-based materials including fibers, yarns, filaments, threads, different fabric types etc. At first, the word “textiles” only refers to woven fabrics, however weaving is not the only manufacturing method, and many other methods were later developed to form textile structures based on their intended use. Knitting and non-woven are other popular types of fabric manufacturing. In the contemporary world, textiles satisfy the material needs for versatile applications, from simple daily clothing to bulletproof jackets, space suits, and doctor’s gowns.

Textiles are divided into two groups consumer textiles for domestic purpose and technical textiles. In consumer textiles aesthetics and comfort are the most important factors while technical textiles functionality properties are the priority

Geo textiles industrial textiles medical textiles and many other areas are examples of technical textiles. Whereas clothing and furnishings are examples of consumer textiles. Each component of a textile product including fiber, yarn, fabric processing, and finishing affects the final product. Components may vary among various textile products as they are selected based on their fitness for purpose. [41(7)(6)]

Fiber is the smallest component of a fabric; fibers are technically spun into yarn and yarns are used to manufacture fabrics. Fiber has a hair-like appearance and higher length-to-width ratio. The sources of fibers may be natural, synthetic, or both. The techniques of felting and bonding directly transfers fibers into fabric. In other cases, yarns are manipulated with different fabric manufacturing systems to produce various fabric constructions. The fibers are twisted or laid out to make long continuous strands of yarn. The yarns are then used to make different types of fabric weaving, knitting, crocheting, knotting, tatting, or braiding. After manufacturing, textile materials are processed and finished to add such value as aesthetics physical characteristics and increase usefulness. The manufacturing of textiles is the oldest industrial art. Dyeing printing and embroidery are all different decorative arts applied to textile material.



material descriptions

Deciding which type of fabric to make an item with is an important decision, as fabrics can have countless qualities. From natural to synthetic fibers and from knit to woven, here's a look at different fabric types and how to identify them.

Some popular materials but there are more:

canvas	lace	spandex
cashmere	leather	suede
chiffon	linen	twill
cotton	polyester	velvet
fleece	satin	viscose
jersey	silk	wool

our products



t-shirt

100% cotton
poly cotton 50/50
combed cotton
organic cotton



polos

100% cotton
poly cotton 50/50



teamwear jersey

polyester
v-neck, crew neck
long sleeve



uniforms

industrial overalls
pants - shirts
chef coats



hoodies and sweatshirts

polyester
fleece cotton

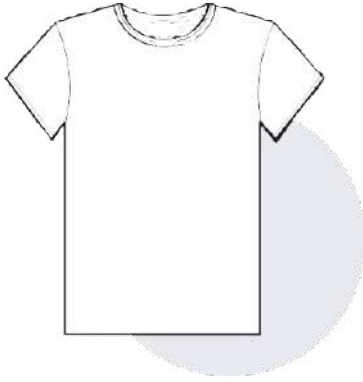


others

curtains - bed
S]sheets - pillows



biodegradable t-shirt



!-shirts

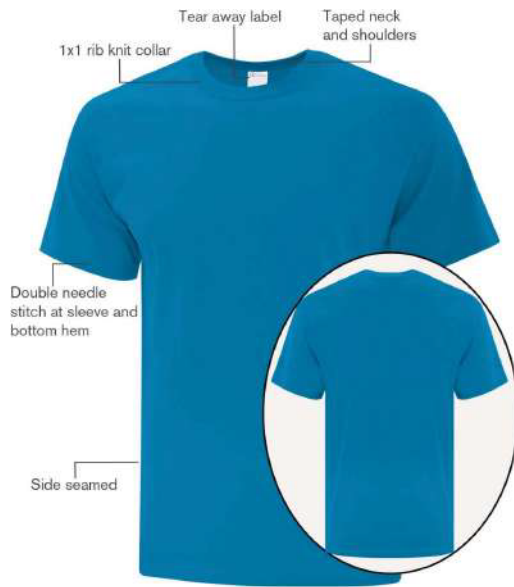
100% cotton
poly cotton 50/50
combed cotton
organic cotton



t-shirts

100% cotton

9.1-oz, 100% cotton
 compacted yarns to minimize shrinkage
 taped neck and shoulders
 tear away label
 side seamed and Tubular
 classic fit



Product Features:

- 9.1-oz, 100% cotton
- Compacted yarns to minimize shrinkage

Adult sizes: S-6XL

Icons/Fabric Features:



'()*+ ,-&)./ & ,0123

GARMENT MEASUREMENTS

Size	S	M	L	XL	2XL	3XL	4XL	5XL	6XL
Chest - Half Measure	18"	20"	22"	24"	26"	28"	30"	32"	34"
Chest - Full Measure	36"	40"	44"	48"	52"	56"	60"	64"	68"
Body Length from HPS	29"	30"	31"	32"	33"	34"	35"	36"	37"
Sleeve Length from Shoulder Seam to Hem	8 1/2"	8 1/2"	8 1/2"	8 1/2"	8 1/2"	8 1/2"	8 1/2"	8 1/2"	8 1/2"

Finished measurements in inches. Refer to "How to Measure" guide for detailed information on measurement instructions.

ADULT General Sizing Guide

Size	S	M	L	XL	2XL	3XL	4XL	5XL	6XL
Chest	34"-36"	38"-40"	42"-44"	46"-48"	50"-52"	54"-55"	56"-57"	58"-61"	61"-64"
Waist	29"-32"	32"-35"	35"-38"	38"-41"	41"-44"	44"-47"	47"-50"	50"-53"	53"-56"
Sleeve Length-CB	32"-33 1/2"	34"-35"	35"-36"	36"-37"	37"-38"	38"-39"	38 1/2"-39"	39"-39 1/2"	39 1/2"-40"

poly cotton 50/50

t-shirts

9.1-oz, 50/50 cotton/polyester
 compacted yarns to minimize shrinkage
 comfort dry fabric blend offers breathability
 taped neck and shoulders
 tear away label
 side seamed and tubular



Product Features:

- 9.1-oz, 60/40 cotton/polyester
- Compacted yarns to minimize shrinkage
- Comfort Dry fabric blend offers breathability and wicks moisture away from skin

Adult sizes: S-6XL

Icons/Fabric Features:



'()*+,-&./&_0123

GARMENT MEASUREMENTS

Size	S	M	L	XL	2XL	3XL	4XL	5XL	6XL
Chest - Half Measure	18"	20"	22"	24"	26"	28"	30"	32"	34"
Chest - Full Measure	36"	40"	44"	48"	52"	58"	60"	64"	68"
Body Length from HPS	29"	30"	31"	32"	33"	34"	35"	36"	37"
Sleeve Length from Shoulder Seam to Hem	8 1/2"	8 1/2"	8 1/2"	8 1/2"	8 1/2"	8 1/2"	8 1/2"	8 1/2"	8 1/2"

Finished measurements in inches. Refer to "How to Measure" guide for detailed information on measurement instructions.

ADULT General Sizing Guide

Size	S	M	L	XL	2XL	3XL	4XL	5XL	6XL
Chest	34"-36"	38"-40"	42"-44"	46"-48"	50"-52"	54"-55"	56"-57"	58"-61"	61"-64"
Waist	29"-32"	32"-35"	35"-38"	38"-41"	41"-44"	44"-47"	47"-50"	50"-53"	53"-56"
	32"-33 1/2"	34"-35"	35"-36"	36"-37"	37"-38"	38"-39"	38 1/2"-39"	39"-39 1/2"	39 1/2"-40"

t-shirts

combed cotton

5.7-oz, combed cotton
 soft 30 single tri-blend jersey
 taped neck and shoulders
 superior printing surface
 side seamed and tubular



Product Features:

- 5.7-oz, 50/25/25 polyester/cotton/rayon
- Combed and ring spun cotton
- Soft 30 single triblend jersey
- Extra soft triblend knit

Adult sizes: XS-4XL

Icons/Fabric Features:



GARMENT MEASUREMENTS									
Size	S	M	L	XL	2XL	3XL	4XL	5XL	6XL
Chest - Half Measure	18"	20"	22"	24"	26"	28"	30"	32"	34"
Chest - Full Measure	36"	40"	44"	48"	52"	56"	60"	64"	68"
Body Length from HPS	29"	30"	31"	32"	33"	34"	35"	36"	37"
Sleeve Length from Shoulder Seam to Hem	8 1/2"	8 1/2"	8 1/2"	8 1/2"	8 1/2"	8 1/2"	8 1/2"	8 1/2"	8 1/2"

Finished measurements in inches. Refer to "How to Measure" guide for detailed information on measurement instructions.

ADULT General Sizing Guide									
Size	S	M	L	XL	2XL	3XL	4XL	5XL	6XL
Chest	34"-36"	38"-40"	42"-44"	46"-48"	50"-52"	54"-55"	56"-57"	58"-61"	61"-64"
Waist	29"-32"	32"-35"	35"-38"	38"-41"	41"-44"	44"-47"	47"-50"	50"-53"	53"-56"
Sleeve Length-CB	32"-33 1/2"	34"-35"	35"-36"	36"-37"	37"-38"	38"-39"	38 1/2"-39"	39"-39 1/2"	39 1/2"-40"

organic cotton

t-shirts

7.9-oz, organic cotton
ori-FIT sweat wicking
jersey tagless
modern fit
side seamed and tubular



Product Features:

- 7.9-oz, 54/40/6 cotton/polyester/organic cotton Dri-FIT sweat wicking jersey
- Double needle stitching throughout

Adult Sizes: XS-4XL

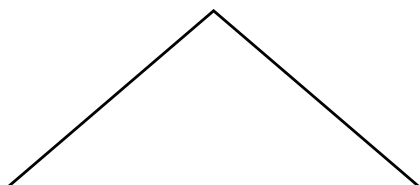
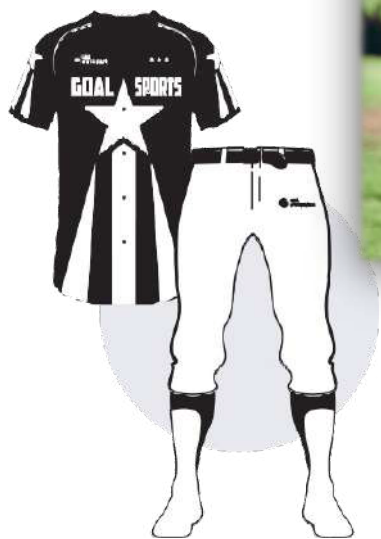
Icons/Fabric Features:



GARMENT MEASUREMENTS									
Size	S	M	L	XL	2XL	3XL	4XL	5XL	6XL
Chest - Half Measure	18"	20"	22"	24"	26"	28"	30"	32"	34"
Chest - Full Measure	36"	40"	44"	48"	52"	56"	60"	64"	68"
Body Length from HPS	29"	30"	31"	32"	33"	34"	35"	36"	37"
Sleeve Length from Shoulder Seam to Hem	8 1/2"	8 1/2"	8 1/2"	8 1/2"	8 1/2"	8 1/2"	8 1/2"	8 1/2"	8 1/2"

Finished measurements in inches. Refer to "How to Measure" guide for detailed information on measurement instructions.

ADULT General Sizing Guide									
Size	S	M	L	XL	2XL	3XL	4XL	5XL	6XL
Chest	34"-36"	38"-40"	42"-44"	46"-48"	50"-52"	54"-56"	56"-57"	58"-61"	61"-64"
Waist	29"-32"	32"-35"	35"-38"	38"-41"	41"-44"	44"-47"	47"-50"	50"-53"	53"-56"
Sleeve Length-CB	32"-33 1/2"	34"-35"	35"-36"	36"-37"	37"-38"	38"-39"	38 1/2"-39"	39"-39 1/2"	39 1/2"-40"



teamwear

polyester
v-neck

crew neck
long sleeve



polyester

teamwear

6.3-oz, 100% performance polyester
wicking technology
no bleed fabric (NBF)
created with a unique cationic
dye process for easy printing
flat lock seams
tagless



Product Features:

- 6.3-oz, 100% performance polyester jersey with wicking technology
- No Bleed Fabric (NBF) created with a unique cationic dye process for easy printing
- Contrast panel at shoulders and sides

Adult sizes: XS-4XL



Icons/Fabric Features



'()*+,-&./&_0123

GARMENT MEASUREMENTS

Size	XS	S	M	L	XL	2XL	3XL	4XL
Chest - Half Measure	18 1/2"	20"	21 1/2"	23"	24 1/2"	26"	28"	30"
Chest - Full Measure	37"	40"	43"	46"	49"	52"	56"	60"
Body Length from HPS	26"	27"	28"	29"	30"	31"	31 1/2"	32"
Sleeve Length-CB	16 3/4"	17 1/2"	18 1/4"	19"	19 3/4"	20 1/2"	21 1/4"	22"

Finished measurements in inches. Refer to "How to Measure" guide for detailed information on measurement instructions.

ADULT General Sizing Guide

Size	XS	S	M	L	XL	2XL	3XL	4XL
Chest	30"-32"	34"-36"	38"-40"	42"-44"	46"-48"	50"-52"	54"-55"	56"-57"
Waist	26"-29"	29"-32"	32"-35"	35"-38"	38"-41"	41"-44"	44"-47"	47"-50"
Sleeve Length-CB	31"-32"	32"-33 1/2"	34"-35"	35"-36"	36"-37"	37"-38"	38"-39"	38 1/2"-39"

6.3-oz, 100% performance polyester
wicking technology No
bleed fabric (NBF)
created with a unique cationic
dye process for easy printing
flat lock seams
tagless

Mitered V-Neck pattern



Product Features:

- 6.6-oz, 100% performance polyester jersey
- Reflective dot matrix pattern at centre back
- Reflective heat transfer at back neck

Ladies' sizes: XS-4XL

Icons/Fabric Features:



'()*+,-&./& ,0123

GARMENT MEASUREMENTS

Size	XS	S	M	L	XL	2XL	3XL	4XL
Chest - Half Measure	16 1/2"	17 1/2"	18 1/2"	20"	21 1/2"	23"	25"	27"
Chest - Full Measure	33"	35"	37"	40"	43"	46"	50"	54"
Body Length from HPS	26"	26 1/2"	27"	27 1/2"	28"	28 1/2"	29"	29 1/2"
Sleeve Length-CB	12 1/2"	13"	13 1/2"	14 1/8"	14 3/4"	15 3/8"	16"	16 5/8"

Finished measurements in inches. Refer to 'How to Measure' guide for detailed information on measurement instructions.

LADIES' General Sizing Guide

Size	XS	S	M	L	XL	2XL	3XL	4XL
Numeric Size	2	4-6	8-10	12-14	16	18-20	22	24
Bust	32"-34"	35"-38"	37"-38"	39"-41"	42"-44"	45"-47"	46"-51"	52"-55"
Waist	24"-26"	26"-27"	28"-30"	30"-32"	33"-35"	36"-38"	40"-42"	42"-44"
Hip	33"-35"	35"-37"	37"-39"	39"-41"	42"-44"	45"-47"	48"-50"	50"-52"
Sleeve Length-CB	30"-30 1/2"	30 1/2"-31"	31 1/2"-32"	32 1/2"-33"	33 1/2"-34"	34"-34 1/2"	34 1/2"-35"	34 1/2"-35"

crew neck

teamwear

6.3-oz, 100% performance polyester
wicking technology
no bleed fabric (NBF)
created with a unique cationic dye
process for easy printing
flat lock seams
tagless



Product Features:

- 6.3-oz, 100% performance polyester jersey with wicking technology
- No Bleed Fabric (NBF) created with a unique cationic dye process for easy printing
- Contrast panel at shoulders and sides

Adult sizes: XS-4XL



Icons/Fabric Features



'()*+,-&./:0123

GARMENT MEASUREMENTS

Size	XS	S	M	L	XL	2XL	3XL	4XL
Chest - Half Measure	18 1/2"	20"	21 1/2"	23"	24 1/2"	26"	28"	30"
Chest - Full Measure	37"	40"	43"	46"	49"	52"	56"	60"
Body Length from HPS	26"	27"	28"	29"	30"	31"	31 1/2"	32"
Sleeve Length-CB	16 3/4"	17 1/2"	18 1/4"	19"	19 3/4"	20 1/2"	21 1/4"	22"

Finished measurements in inches. Refer to "How to Measure" guide for detailed information on measurement instructions.

ADULT General Sizing Guide

Size	XS	S	M	L	XL	2XL	3XL	4XL
Chest	30"-32"	34"-36"	38"-40"	42"-44"	46"-48"	50"-52"	54"-56"	56"-57"
Waist	26"-29"	29"-32"	32"-35"	35"-38"	38"-41"	41"-44"	44"-47"	47"-50"
Sleeve Length-CB	31"-32"	32"-33 1/2"	34"-35"	35"-36"	36"-37"	37"-38"	38"-39"	38 1/2"-39"

teamwear

long sleeve

6.3-oz, 100% performance polyester jersey with wicking technology
 no Bleed Fabric (NBF)
 side seamed
 tagless



Double needle cover stitch through bottom hem and cuffs



S350LS

Product Features:

- 6.3-oz, 100% performance polyester jersey with wicking technology
- No Bleed Fabric (NBF) created with a unique cationic dye process for easy printing
- Side seamed

Adult sizes: XS-4XL

Icons/Fabric Features:

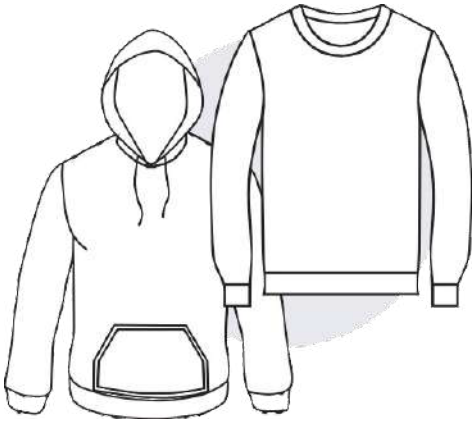


'()*+,-&./& ,0123

GARMENT MEASUREMENTS								
Size	XS	S	M	L	XL	2XL	3XL	4XL
Chest - Half Measure	18 1/2"	20"	21 1/2"	23"	24 1/2"	26"	28"	30"
Chest - Full Measure	38"	40"	44"	46"	49"	52"	56"	60"
Body Length from HPS	27"	28"	29"	30"	31"	32"	32 1/2"	33"
Sleeve Length-CB	33 1/4"	34"	34 3/4"	35 1/2"	36 1/4"	37"	37 3/4"	38 1/2"

Finished measurements in inches. Refer to "How to Measure" guide for detailed information on measurement instructions.

ADULT General Sizing Guide								
Size	XS	S	M	L	XL	2XL	3XL	4XL
Chest	30"-32"	34"-36"	38"-40"	42"-44"	46"-48"	50"-52"	54"-55"	56"-57"
Waist	26"-29"	29"-32"	32"-35"	35"-38"	38"-41"	41"-44"	44"-47"	47"-50"
Sleeve Length-CB	31"-32"	32"-33 1/2"	34"-35"	35"-36"	36"-37"	37"-38"	38"-39"	38 1/2"-39"



sweatshirts
hoodies

polyester
fleece



cotton
zipper



sweatshirts

polyester

15.7-oz, polyester fleece
 combed and RING SPUN cotton
 tear away label
 superior printing surface
 classic fit
 **85/12/3 cotton/polyester/viscose



Product Features:

- 13.3-oz, 50/50 cotton/polyester fleece
- Air jet spun yarn for a softer feel and reduced pilling
- Rib knit cuffs, collar and waistband
- Quarter-turned

Adult Sizes: S-5XL

Icons/Fabric Features:



'()*+ ,-&)./& ,0123

GARMENT MEASUREMENTS

Size	S	M	L	XL	2XL	3XL	4XL	5XL
Chest - Half Measure	20"	22"	24"	26"	28"	30"	32"	34"
Chest - Full Measure	40"	44"	48"	52"	56"	60"	64"	68"
Body Length from HPS	27"	28"	29"	30"	31"	32"	33"	34"
Sleeve Length-CB	33 1/2"	34 1/2"	35 1/2"	36 1/2"	37 1/2"	38 1/2"	39 1/2"	40 1/2"

Finished measurements in inches. Refer to "How to Measure" guide for detailed information on measurement instructions.

ADULT General Sizing Guide

Size	S	M	L	XL	2XL	3XL	4XL	5XL
Chest	34"-36"	38"-40"	42"-44"	46"-48"	50"-52"	54"-55"	56"-57"	58"-61"
Waist	29"-32"	32"-35"	35"-38"	38"-41"	41"-44"	44"-47"	47"-50"	50"-53"
Sleeve Length-CB	32"-33 1/2"	34"-35"	35"-36"	36"-37"	37"-38"	38"-39"	38 1/2"-39"	39"-39 1/2"

fleece

sweatshirts

15.7-oz, polyester fleece
combed and R NG SPUN cotton
tear away label

superior printing surface
classic fit

**85/12/3 cotton/polyester/viscose



Product Features:

- 15.7-oz, 60/40 cotton/polyester fleece
- Combed and ring spun cotton

Adult sizes: XS-4XL

Icons/Fabric Features:



'()*+ ,-&./& ,0123

GARMENT MEASUREMENTS

Size	S	M	L	XL	2XL	3XL	4XL	5XL
Chest - Half Measure	20"	22"	24"	26"	28"	30"	32"	34"
Chest - Full Measure	40"	44"	48"	52"	56"	60"	64"	68"
Body Length from HPS	27"	28"	29"	30"	31"	32"	33"	34"
Sleeve Length-CB	33 1/2"	34 1/2"	35 1/2"	36 1/2"	37 1/2"	38 1/2"	39 1/2"	40 1/2"

Finished measurements in inches. Refer to "How to Measure" guide for detailed information on measurement instructions.

ADULT General Sizing Guide

Size	S	M	L	XL	2XL	3XL	4XL	5XL
Chest	34"-36"	38"-40"	42"-44"	46"-48"	50"-52"	54"-55"	56"-57"	58"-61"
Waist	29"-32"	32"-35"	35"-38"	38"-41"	41"-44"	44"-47"	47"-50"	50"-53"
Sleeve Length-CB	32"-33 1/2"	34"-35"	35"-36"	36"-37"	37"-38"	38"-39"	38 1/2"-39"	39"-39 1/2"

sweatshirts

cotton

9 8-oz, 60/40 cotton/lightweight fleece
 combed and R NG SPUN cotton
 flat lock seams
 superior printing surface
 modern fit



Product Features:

- 9.8 oz, 60/40 cotton/polyester lightweight fleece
- Combed and ring spun cotton
- Ultra soft 32 single cotton

Adult sizes: XS-4XL

Icons/Fabric Features:



GARMENT MEASUREMENTS								
Size	XS	S	M	L	XL	2XL	3XL	4XL
Chest - Half Measure	17 3/4"	19 1/4"	20 3/4"	22 1/4"	23 3/4"	25 1/4"	27 1/4"	29 1/4"
Chest - Full Measure	35 1/2"	38 1/2"	41 1/2"	44 1/2"	47 1/2"	50 1/2"	54 1/2"	58 1/2"
Body Length from HPS	27"	28"	29"	30"	31"	32"	32 1/2"	33"
Sleeve Length-CB	34 1/4"	35"	35 3/4"	36 1/2"	37 1/4"	38"	38 3/4"	39 1/2"

Finished measurements in inches. Refer to "How to Measure" guide for detailed information on measurement instructions.

ADULT General Sizing Guide								
Size	XS	S	M	L	XL	2XL	3XL	4XL
Chest	30"-32"	34"-36"	38"-40"	42"-44"	46"-48"	50"-52"	54"-56"	56"-57"
Waist	26"-29"	29"-32"	32"-35"	35"-38"	38"-41"	41"-44"	44"-47"	47"-50"
Sleeve Length-CB	31"-32"	32"-33 1/2"	34"-35"	35"-36"	36"-37"	37"-38"	38"-39"	38 1/2"-39"

polyester

hoodies

12-oz, 100% performance polyester double-knit
unlined hood with drawstring
moisture wicking
breathable classic fit



Product Features:

- 12-oz, 100% performance polyester double-knit fleece
- Special ATC™ panel hood for easy decoration
- Partial self-fabric neck taping
- Front pouch pocket
- 1x1 rib knit waistband
- Reinforced topstitching throughout
- ATC™ locker loop neck label

Adult sizes: XS-4XL

Icons/Fabric Features:



!"#\$%&'()*+,-./

GARMENT MEASUREMENTS

Size	XS	S	M	L	XL	2XL	3XL	4XL
Chest - Half Measure	20 1/2"	22"	23 1/2"	25"	26 1/2"	28"	30"	32"
Chest - Full Measure	41"	44"	47"	50"	53"	56"	60"	64"
Body Length from HPS	28"	28 1/2"	29"	29 1/2"	30 1/2"	31 1/2"	32"	32 1/2"
Sleeve Length-CB	35"	35 3/4"	36 1/2"	37 1/4"	38"	38 3/4"	39 1/4"	39 3/4"

Finished measurements in inches. Refer to "How to Measure" guide for detailed information on measurement instructions.

ADULT General Sizing Guide

Size	XS	S	M	L	XL	2XL	3XL	4XL
Chest	30"-32"	34"-36"	38"-40"	42"-44"	46"-48"	50"-52"	54"-56"	56"-57"
Waist	26"-29"	29"-32"	32"-35"	35"-38"	38"-41"	41"-44"	44"-47"	47"-50"
Sleeve Length-CB	31"-32"	32"-33 1/2"	34"-35"	35"-36"	36"-37"	37"-38"	38"-39"	38 1/2"-39"

hoodies

fleece

13-oz, 50/50 cotton/polyester fleece
 compacted yarns to minimize shrinkage
 double lined hood with drawstring
 anti-pill
 classic fit



ATCF2500

Product Features:

- 13-oz, 50/50 cotton/polyester fleece
- Compacted yarns to minimize shrinkage

Adult sizes: S-4XL

Icons/Fabric Features:



!"#\$%&'()*#+),-./

GARMENT MEASUREMENTS							
Size	S	M	L	XL	2XL	3XL	4XL
Chest - Half Measure	20"	22"	24"	26"	28"	30"	32"
Chest - Full Measure	40"	44"	48"	52"	56"	60"	64"
Body Length from HPS (At back)	27 1/2"	28 1/2"	29 1/2"	30 1/2"	31 1/2"	32 1/2"	33 1/2"
Sleeve Length-CB	34 1/2"	35 1/4"	36"	36 3/4"	37 1/2"	38 1/4"	39"

Finished measurements in inches. Refer to "How to Measure" guide for detailed information on measurement instructions.

ADULT General Sizing Guide							
Size	S	M	L	XL	2XL	3XL	4XL
Chest	34"-36"	38"-40"	42"-44"	46"-48"	50"-52"	54"-55"	56"-57"
Waist	29"-32"	32"-35"	35"-38"	38"-41"	41"-44"	44"-47"	47"-50"
Sleeve Length-CB	32"-33 1/2"	34"-35"	35"-36"	36"-37"	37"-38"	38"-39"	38 1/2"-39"

cotton

hoodies

15.7-oz, 60/40 cotton fleece c
 combed and R NG SPUN cotton
 tear away label
 superior printing surface
 classic fit
 *80/20 cotton/polyester



Product Features:

- 15.7-oz, 60/40 cotton/polyester fleece
- Combed and ring spun cotton
- Tear away label

Adult sizes: XS-4XL

Icons/Fabric Features:



!"#\$%&'()*#+) ', -./

GARMENT MEASUREMENTS								
Size	XS	S	M	L	XL	2XL	3XL	4XL
Chest - Half Measure	19 1/2"	21"	22 1/2"	24"	25 1/2"	27"	29"	31"
Chest - Full Measure	39"	42"	45"	48"	51"	54"	58"	62"
Body Length from HPS	28 1/2"	29"	29 1/2"	30"	31"	32"	32 1/2"	33"
Sleeve Length-CB	34 3/4"	35 1/2"	36 1/4"	37"	37 3/4"	38 1/2"	39"	39 1/2"

Finished measurements in inches. Refer to "How to Measure" guide for detailed information on measurement instructions.

ADULT General Sizing Guide								
Size	XS	S	M	L	XL	2XL	3XL	4XL
Chest	30"-32"	34"-36"	38"-40"	42"-44"	46"-48"	50"-52"	54"-55"	56"-57"
Waist	26"-29"	29"-32"	32"-35"	35"-38"	38"-41"	41"-44"	44"-47"	47"-50"
Sleeve Length-CB	31"-32"	32"-33 1/2"	34"-35"	35"-36"	36"-37"	37"-38"	38"-39"	38 1/2"-39"

hoodies

zipper/cotton/fleece

9.8-oz, 60/40 cotton/polyester fleece
 combed and R NG SPUN cotton
 unlined hood with no drawstring
 flat lock seams
 modern fit with zipper



Product Features:

- 9.8 oz, 60/40 cotton/polyester lightweight fleece
- Combed and ring spun cotton
- Ultra soft 32 single cotton

Adult sizes: XS-4XL



Icons/Fabric Features:



! " # \$ % & ' () * + , - . /

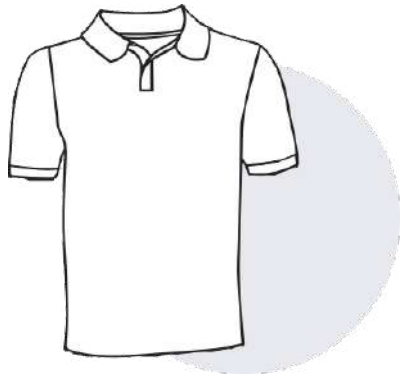
GARMENT MEASUREMENTS

Size	XS	S	M	L	XL	2XL	3XL	4XL
Chest - Half Measure	17 3/4"	19 1/4"	20 3/4"	22 1/4"	23 3/4"	25 1/4"	27 1/4"	29 1/4"
Chest - Full Measure	35 1/2"	38 1/2"	41 1/2"	44 1/2"	47 1/2"	50 1/2"	54 1/2"	58 1/2"
Body Length from HPS	28 1/2"	29"	29 1/2"	30"	31"	32"	32 1/2"	33"
Sleeve Length-CB	34 3/4"	35 1/2"	36 1/4"	37"	37 3/4"	38 1/2"	39 1/2"	40 1/2"

Finished measurements in inches. Refer to 'How to Measure' guide for detailed information on measurement instructions.

ADULT General Sizing Guide

Size	XS	S	M	L	XL	2XL	3XL	4XL
Chest	30"-32"	34"-36"	38"-40"	42"-44"	46"-48"	50"-52"	54"-55"	56"-57"
Waist	26"-29"	29"-32"	32"-35"	35"-38"	38"-41"	41"-44"	44"-47"	47"-50"
Sleeve Length-CB	31"-32"	32"-33 1/2"	34"-35"	35"-36"	36"-37"	37"-38"	38"-39"	38 1/2"-39"



polos

100% pique cotton
poly cotton 50/50
polyester
polyester dry fit



polos

100% pique cotton

10.8-oz, 100% combe ring spun cotton pique
 soil release treatment
 will remove most stains when washed
 rib knit collar
 anti-pill



Product Features:

- 10.8-oz, 100% combed and ring spun cotton pique
- Soil release treatment will remove most stains when washed

Ladies' sizes: XS-4XL

Icons/Fabric Features:



!"#\$%&'()*+,-./

GARMENT MEASUREMENTS

Size	XS	S	M	L	XL	2XL	3XL	4XL
Chest - <i>Half Measure</i>	18 1/2"	20"	21 1/2"	23"	24 1/2"	26"	28"	30"
Chest - <i>Full Measure</i>	37"	40"	43"	46"	49"	52"	56"	60"
Body Length from HPS	28"	29"	30"	31"	32"	33"	33 1/2"	34"
Sleeve Length-CB	17 3/4"	18 1/2"	19 1/4"	20"	20 3/4"	21 1/2"	22 1/4"	23"

Finished measurements in inches. Refer to "How to Measure" guide for detailed information on measurement instructions.

ADULT General Sizing Guide

Size	XS	S	M	L	XL	2XL	3XL	4XL
Chest	30"-32"	34"-36"	38"-40"	42"-44"	46"-48"	50"-52"	54"-55"	56"-57"
Waist	26"-29"	29"-32"	32"-35"	35"-38"	38"-41"	41"-44"	44"-47"	47"-50"
Sleeve Length-CB	31"-32"	32"-33 1/2"	34"-35"	35"-36"	36"-37"	37"-38"	38"-39"	38 1/2"-39"

poly cotton 50/50

polos

4.9-oz, 50/50 performance polyester/cotton
 self-fabric collar
 3-button placket
 open sleeve
 moisture wicking
 breathable



Product Features:

4.9-oz, 50/50 performance polyester/cotton
 polyester double-knit jacquard

Adult sizes: S-4XL

Icons/Fabric Features:



!"#\$%&'()*+,-./

GARMENT MEASUREMENTS							
Size	S	M	L	XL	2XL	3XL	4XL
Chest - Half Measure	20 1/2" - 21 1/2"	21 1/2" - 22 1/2"	23" - 24"	24 1/2" - 25 1/2"	26" - 27"	27 1/2" - 28 1/2"	29" - 30"
Chest - Full Measure	41" - 43"	43" - 45"	48" - 48"	49" - 51"	52" - 54"	55" - 57"	58" - 60"
Body Length from HPS	28" - 29"	29" - 30"	30" - 31"	31" - 32"	32" - 33"	33" - 34"	34" - 35"
Sleeve Length - CB	18 1/2" - 19"	19" - 19 1/2"	19 3/4" - 20 1/4"	20 1/2" - 21"	21 1/4" - 21 3/4"	22" - 22 1/2"	22 3/4" - 22 1/2"

Finished measurements in inches. Refer to "How to Measure" guide for detailed information on measurement instructions.

ADULT General Sizing Guide							
Size	S	M	L	XL	2XL	3XL	4XL
Chest	34"-36"	38"-40"	42"-44"	46"-48"	50"-52"	54"-55"	56"-57"
Waist	29"-32"	32"-35"	35"-38"	38"-41"	41"-44"	44"-47"	47"-50"
Sleeve Length-CB	32"-33 1/2"	34"-35"	35"-36"	36"-37"	37"-38"	38"-39"	38 1/2"-39"

polos

polyester

6.3-oz, 100% performance polyester
jersey self-fabric collar
moisture wicking
breathable



Product Features:

- 6.3-oz, 100% performance polyester jersey
- Reinforced topstitching throughout
- 3-button placket
- Side slits

Adult sizes: XS-4XL

Icons/Fabric Features:



!"#\$%&'()*+,-./

GARMENT MEASUREMENTS								
Size	XS	S	M	L	XL	2XL	3XL	4XL
Chest - Half Measure	18 1/2"	20"	21 1/2"	23"	24 1/2"	26"	28"	30"
Chest - Full Measure	37"	40"	43"	46"	49"	52"	56"	60"
Body Length from HPS	28"	29"	30"	31"	32"	33"	33 1/2"	34"
Sleeve Length-CB	17 3/4"	18 1/2"	19 1/4"	20"	20 3/4"	21 1/2"	22 1/4"	23"

Finished measurements in inches. Refer to "How to Measure" guide for detailed information on measurement instructions.

ADULT General Sizing Guide								
Size	XS	S	M	L	XL	2XL	3XL	4XL
Chest	30"-32"	34"-36"	38"-40"	42"-44"	46"-48"	50"-52"	54"-56"	56"-57"
Waist	28"-29"	29"-32"	32"-35"	35"-38"	38"-41"	41"-44"	44"-47"	47"-50"
Sleeve Length-CB	31"-32"	32"-33 1/2"	34"-35"	35"-36"	36"-37"	37"-38"	38"-39"	38 1/2"-39"

polyester dry fit

hoodies

polyester dry fit 6.6-oz, 100% performance polyester
 no bleed fabric (NBF)
 self-fabric collar
 moisture wicking
 breathable

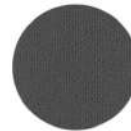


Product Features:

- 6.6-oz, 100% performance polyester double-knit jersey
- No Bleed Fabric (NBF) created with a unique cationic dye process for easy printing
- Double needle cover stitch at sleeve and bottom hem

Adult sizes: XS-4XL

Icons/Fabric Features:

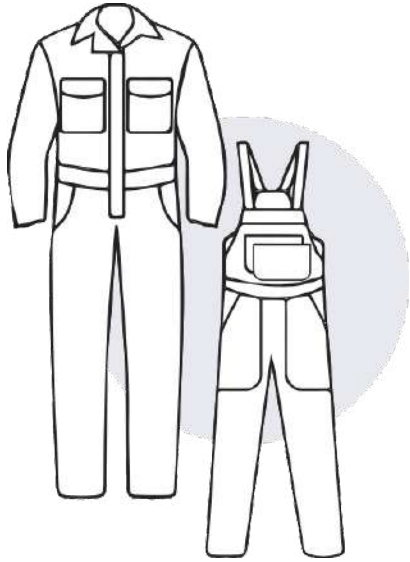


!"#\$%&'()*#+) ',-./

GARMENT MEASUREMENTS								
Size	XS	S	M	L	XL	2XL	3XL	4XL
Chest - Half Measure	18 1/2"	20"	21 1/2"	23"	24 1/2"	26"	28"	30"
Chest - Full Measure	37"	40"	43"	46"	49"	52"	56"	60"
Body Length from HPS	28"	29"	30"	31"	32"	33"	33 1/2"	34"
Sleeve Length-CB	17 3/4"	18 1/2"	19 1/4"	20"	20 3/4"	21 1/2"	22 1/4"	23"

Finished measurements in inches. Refer to "How to Measure" guide for detailed information on measurement instructions.

ADULT General Sizing Guide								
Size	XS	S	M	L	XL	2XL	3XL	4XL
Chest	30"-32"	34"-36"	38"-40"	42"-44"	46"-48"	50"-52"	54"-55"	56"-57"
Waist	26"-29"	29"-32"	32"-35"	35"-38"	38"-41"	41"-44"	44"-47"	47"-50"
Sleeve Length-CB	31"-32"	32"-33 1/2"	34"-35"	35"-36"	36"-37"	37"-38"	38"-39"	38 1/2"-39"



uniforms

- industrial
- overalls
- pants
- shirts
- chef coats

industrial

uniforms

7-oz, 65/35 polyester/cotton ripstop
durable press with soil release and wickable finish
two-piece lined collar
two button-thru chest pockets
bar tacked pencil stall on left pocket
360! visibility with front and back 2" silver reflective striping
garment is suitable for industrial laundry heavy soil wash setting
garment is suitable for industrial laundry light soil wash setting
garment is suitable for home laundry care
durable press Touchtex" technology UPF 40
ripstop fabric classic fit



industrial

overalls



Product Features:

- 12-oz, 65/35 polyester/cotton twill
- Concealed zipper front with gripper closure at top of the zipper and lapel
- Two patch chest pockets
- Two front swing pockets
- Patch back pockets and rule pocket on right leg
- Hemmed long sleeves with adjustable snap closure
- Action back
- 2" yellow silver reflective striping

Regular Sizes: 38" - 60", inseam 30"

Long Sizes: 40" - 56", inseam 32"

Icons/Fabric Features:

INDUSTRIAL
LAUNDRY

IL-HS

LIGHT
SOIL WASH

IL-LS

HOME
WASH

HW



industrial

pants

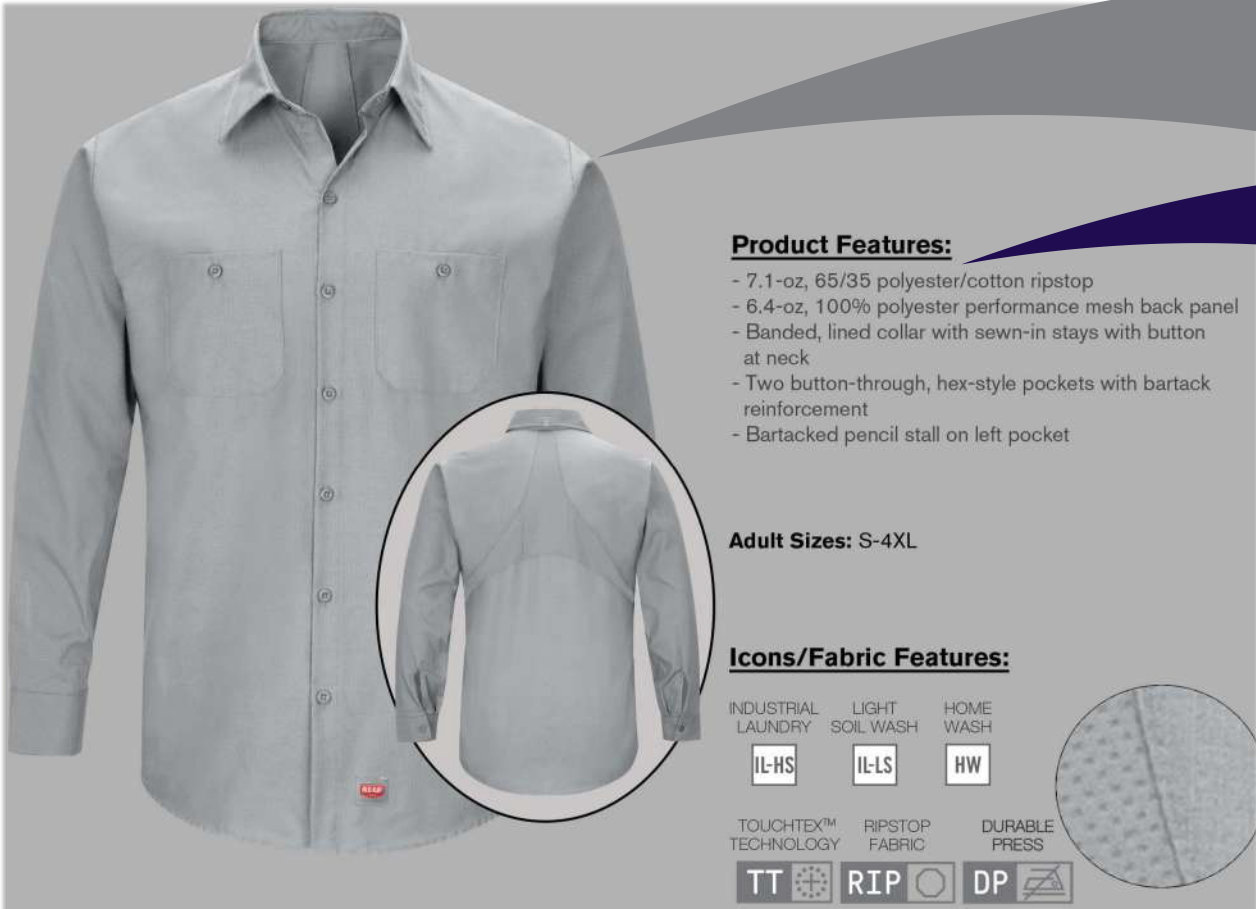
12-oz, 65/35 polyester/cotton twill
brass zipper and snap waist closure
side elastic waistband
two slant front pockets
two patch back pockets
soil release finish
wrinkle resistant



garment is suitable for industrial laundry heavy soil wash setting
garment is suitable industrial laundry light soil wash setting
garment is suitable for home laundry care for

shirts

industrial



Product Features:

- 7.1-oz, 65/35 polyester/cotton ripstop
- 6.4-oz, 100% polyester performance mesh back panel
- Banded, lined collar with sewn-in stays with button at neck
- Two button-through, hex-style pockets with bartack reinforcement
- Bartacked pencil stall on left pocket

Adult Sizes: S-4XL

Icons/Fabric Features:

INDUSTRIAL LAUNDRY	LIGHT SOIL WASH	HOME WASH
IL-HS	IL-LS	HW
TOUCHEX™ TECHNOLOGY	RIPSTOP FABRIC	DURABLE PRESS
TT	RIP	DP

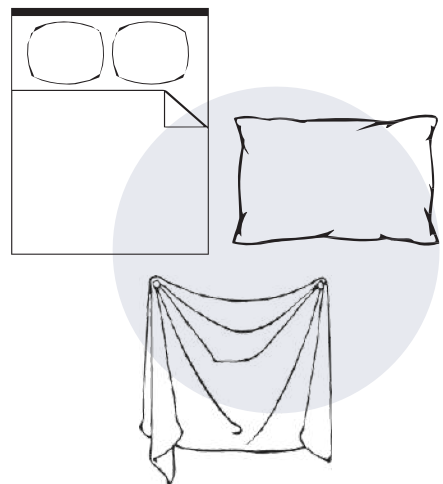
7.1-oz, 65/35 polyester/cotton ripstop
6.4-oz, 100% polyester performance mesh back panel
banded, lined collar with sewn-in stays with button at neck
two button-through, hex-style pockets with bartack reinforcement
bartacked pencil stall on left pocket

industrial

chef coats

7.1-oz, 65/35 polyester/cotton ripstop 100%
performance polyester flex mesh
ten tonal button closures
mesh lined stand up collar
double breasted, clean-finish vented cuffs
left chest pocket
thermometer pocket on left sleeve
patented, science-based MIMIX™ design for all day comfort
garment is suitable for industrial laundry heavy soil wash setting
garment is suitable for home laundry care
durable press
UV buttons
OilBlok technology
Touchtex™ technology





others

curtains
bed sheets
pillows
also
table clothes
napkins



curtains

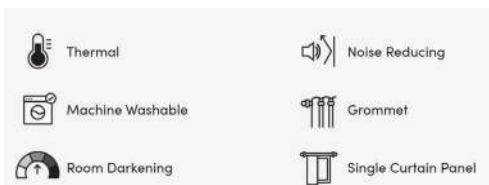
others



Our 100% Polyester luxurious faux-linen pair of 2 premium sheer window curtains are made from high-quality durable polyester that's easy to wash and resistant to tears and snugs.

We offer short lengths 54 x 72, standard lengths 54 x 84, long lengths 54 x 96, and extra-long 54 x 108 as well as super rare 54 x 120 and 54 x 132 inches.

We are able to manufacture any custom size.



[+20 More](#)



Charcoal



Vanilla



Teal



Beige



Sea Foam



Taupe



Mecca



Taupe

others

bed sheets



Superior Quality and Comfort: Crafted from the highest quality double-brushed microfiber, our sheets deliver a luxurious, soft touch. The cool, breathable, and remarkably soft sheets offer a serene and restful sleep environment.



Machine washable



Wrinkle Resistant: Wrinkle Resistant

Pocket Depth

14"; 14" and under (Standard)

Features

Wrinkle Resistant; Machine Washable [EU Only]; Brushed

Feel

Warm & Cozy

Product Material

Microfiber / Polyester

Weave

Plain Weave

+20
More



Aqua



Black



Bright White



Brown



Burgundy



Cream



Eggplant



Grey

pillows

others



Our medium-density pillows. A 230-thread count, 100% cotton shell generously filled with 100% virgin hollow-slick polyester fiber for added durability.

It is designed for all sleep positions. This pillow is the perfect balance of cost-effectiveness and quality.



Medium



Machine Washable

Standard

Select

Queen

Select

King

Select

Overall	20" H X 30" W X 6"
---------	--------------------

Overall Product Weight	1.7 lb.
------------------------	---------



biodegradable material



what is biodegradable material



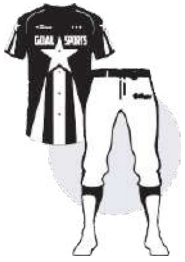
Biodegradable materials are materials that can safely be disposed of in the natural environment, where they decompose and breakdown completely, in the presence of microorganisms like bacteria and fungi found in soil.

A truly biodegradable material breaks down completely, in less than a year, and leaves behind no residues or traces.

As we move towards more sustainable ways to live, we are increasingly looking for materials and products that are reusable, zero-waste, and eco-friendly - that do not contribute to our huge waste crisis.



our biodegradable products



team wear

polyester
v-neck
crew neck
long sleeve



sweat shirts hoodies

polyester
fleece
cotton zipper



t-shirts

100% cotton
poly cotton 50/50
combed cotton
organic cotton



polos

100% pique cotton
poly cotton 50/50
polyester
polyester dry fit





Canada Headquarters

EkoMed Global Canada



EkoMed Global, Canada offers its customers many conveniences from storage, sales, finance to door-to-doors shipping. EkoMed Canada Team has more than 20 years of industry experience.

EkoMed Global holds Health Canada medical device establishment license MDEL #11585.



China manufacturing

No.71 Tuowu Road, Fenshui Town ,tonglu, Hangzhou
No:zhejiang province ,China



Canada Headquarters

3-5510 Mainway Burlington, ON L7L6C4

+16473306496

sales@ekomedglobal.com



logistics and transportation facility



Quality control and loading details are inspected by artificial intelligence in the storage and management facility of EkoMed Global, located on a total area of 5,000 square meters, with the RFID coding system, all processes from production to shipment are made ready for shipment at the end-to-end control point, they deliver customers and EkoMed's distribution or storage points all over the world. The facility is in a central area with easy access and close to sea and air cargo parts. Within the facility, 3 separate inspection rooms have been specially designed for independent inspection companies and their employees.





EkoMed

!"\$%&"



!!!"\$%&#'()%*+)",,%&